

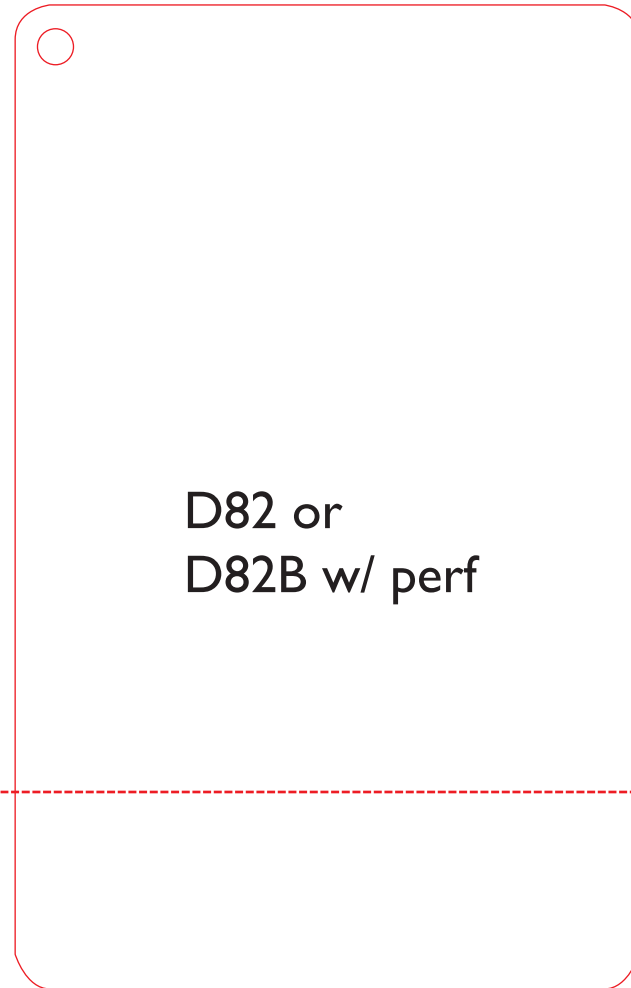


2008-2009 Standard Hangtag Dies



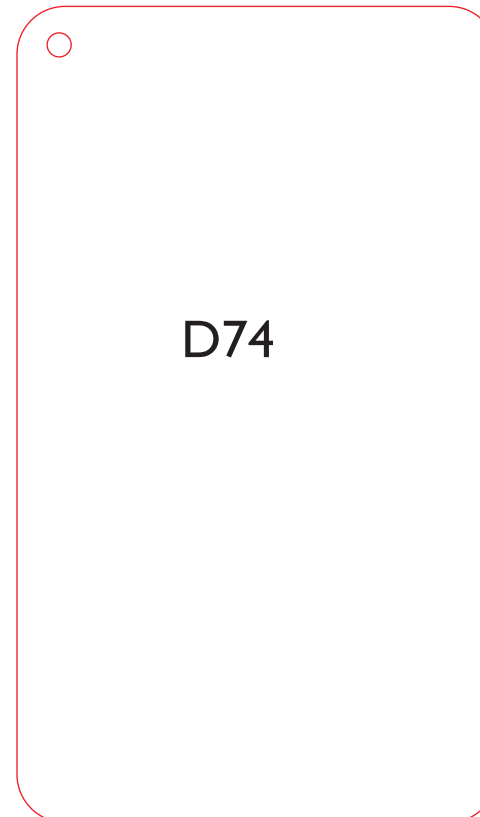
D75M

Size:
2.812" x 6.303"



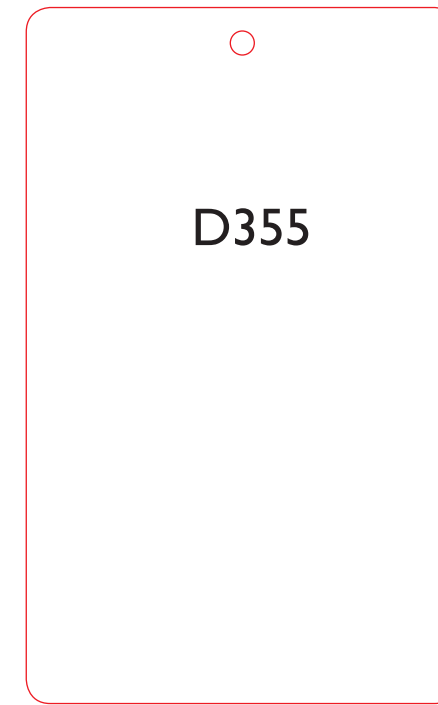
D82 or
D82B w/ perf

Size:
3.25" x 5.125"



D74

Size:
2.5" x 4.25"



D355

Size:
2.25" x 3.625"



D50

Size:
1.979" x 4.638"

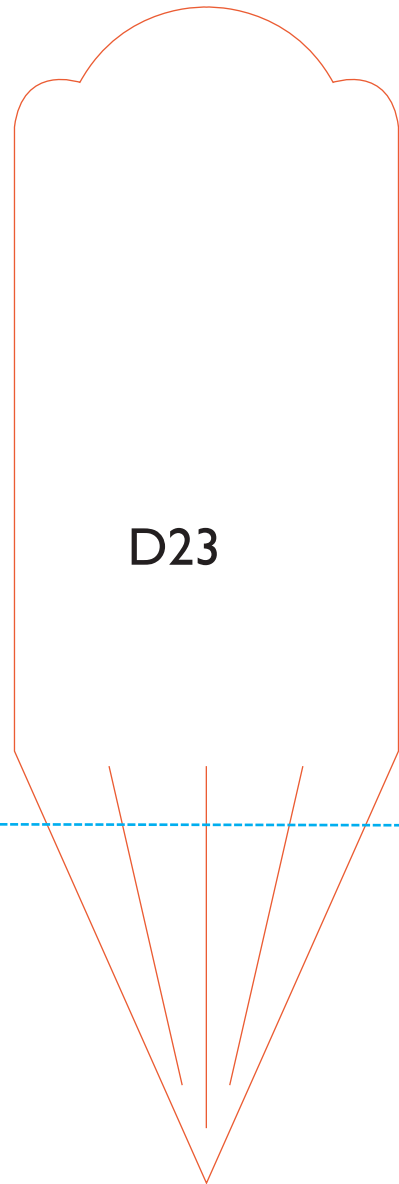


Special Instructions:
D75 is no bleed
D82, D74, D355, and D50 have bleed.

Special Instructions:
Standard Hole is .125" or 1/8 th punched
If strung the hole size will be .1875" or 3/16 th

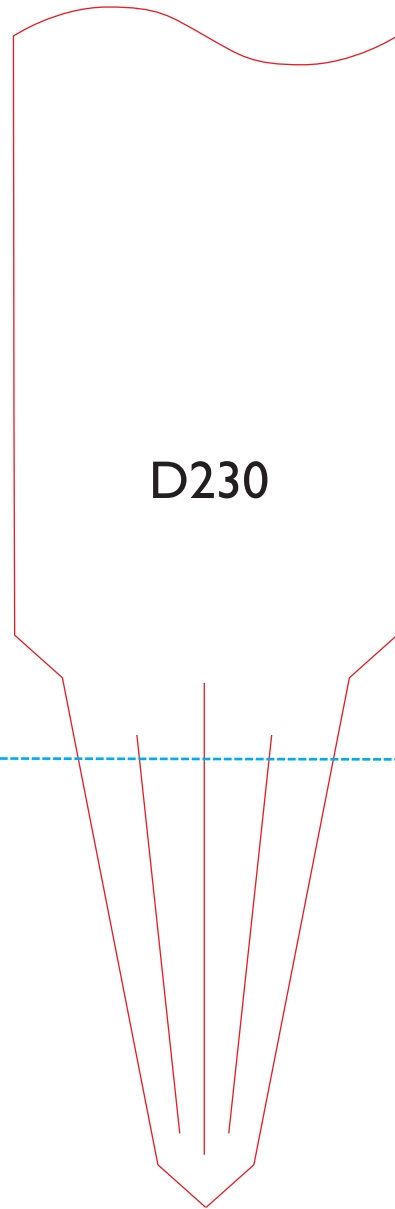


2008-2009 Standard Pot Tag Dies



D23

Size:
2" x 6.125"



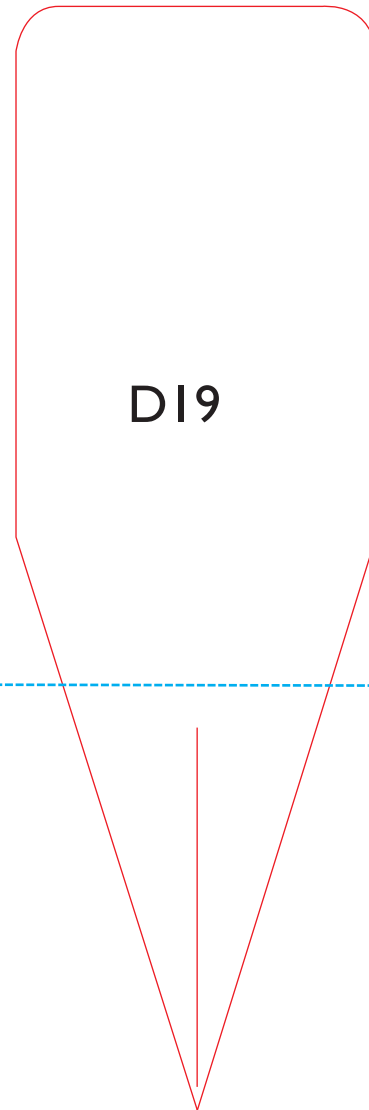
D230

Size:
2" x 6.25"



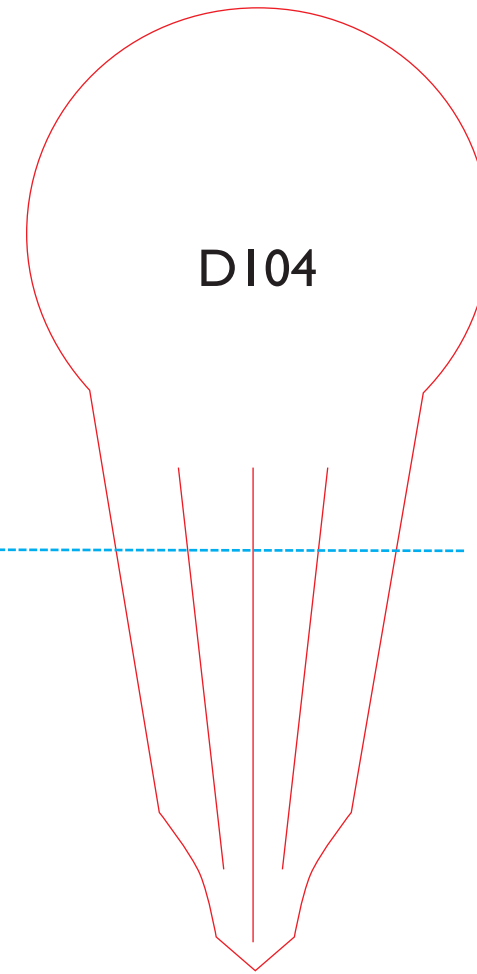
D229

Size:
1.49" x 4.99"



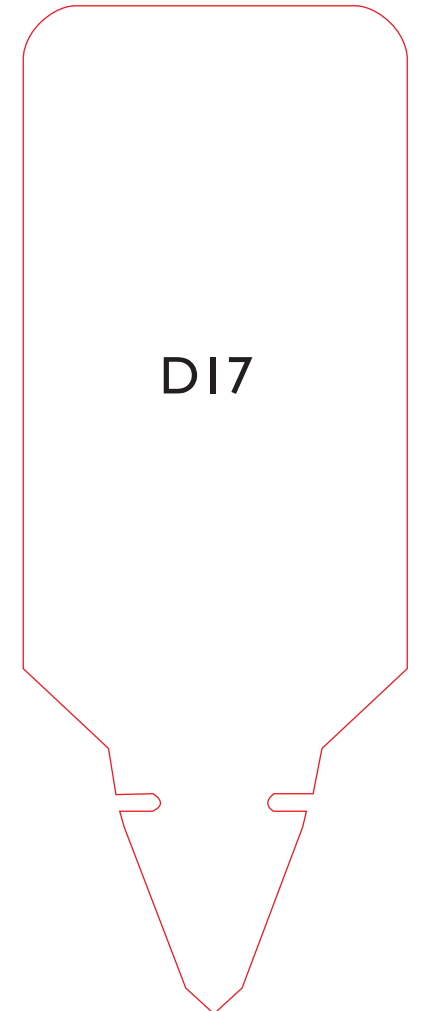
D19

Size:
1.875" x 5.75"



D104

Size:
2.4094" x 5.0149"



D17

Size:
2" x 5.25"



Estimated
Soil line



Special Instructions:
D229, D230, and D104 is no bleed
D23, D19, and D17 have bleed.